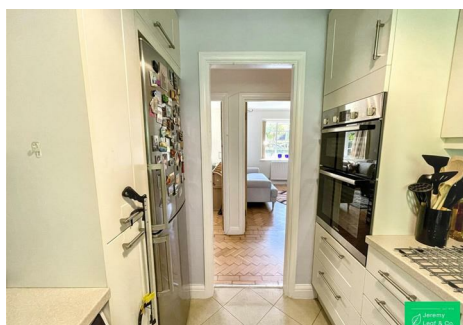


est 1979

Jeremy  
Leaf & Co.



Denison Close, London

Offers Over £400,000

- 2 Double Bedrooms
- Ideal for first time buyers
- Easy access to transport
- Spacious Living Room
- No Chain
- Viewings are highly recommended!

98 High Road, London, N2 9EB  
020 8444 5222

eastfinchley@jeremyleaf.co.uk  
<https://www.jeremyleaf.co.uk/>

# Denison Close, London, N2 0JT

Jeremy Leaf are pleased to bring to the market this two-bedroom ground floor purpose-built flat, ideally situated in a quiet residential cul-de-sac on Denison Close, N2.

Offered with no onward chain, the property benefits from a Leasehold tenure with a Share of Freehold, over 900 years remaining on the lease, and a service charge of £3,000 per year, representing an excellent opportunity for first-time buyers or investors alike.

The accommodation comprises a spacious separate reception room, a fully fitted kitchen, two well-proportioned bedrooms, and a family bathroom. Further benefits include direct access to extensive, well-maintained communal lawned gardens to the front and rear, alongside unallocated off-street resident parking.

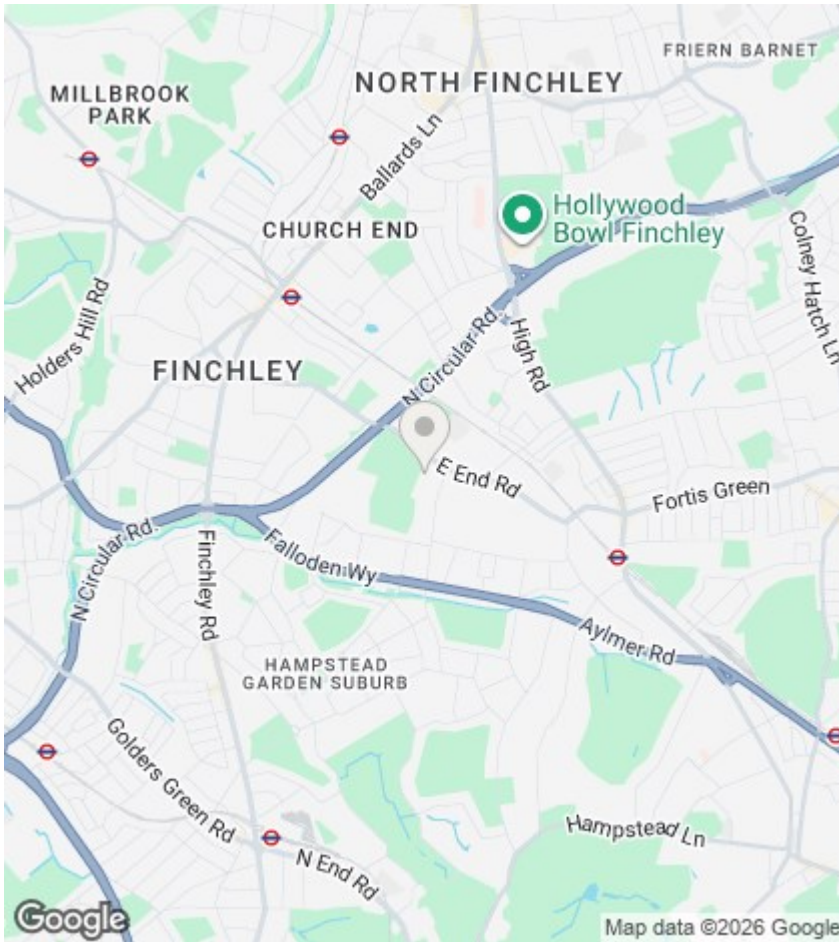
Denison Close is a highly sought-after turning on the borders of Hampstead Garden Suburb and East Finchley. The property is ideally positioned within comfortable walking distance of East Finchley Underground Station (Northern Line), providing excellent transport links into Central London, and sits within the catchment area of highly regarded local schools, including Brookland Primary School.



Council Tax Band: D







## Directions

## Viewings

Viewings by arrangement only. Call 020 8444 5222 to make an appointment.

## EPC Rating:

D

| Energy Efficiency Rating                    |  | Current                 | Potential |
|---|--|-------------------------|-----------|
| Very energy efficient - lower running costs |  |                         |           |
| (92 plus) <b>A</b>                          |  |                         |           |
| (81-91) <b>B</b>                            |  |                         |           |
| (69-80) <b>C</b>                            |  |                         |           |
| (55-68) <b>D</b>                            |  | <b>63</b>               | <b>76</b> |
| (39-54) <b>E</b>                            |  |                         |           |
| (21-38) <b>F</b>                            |  |                         |           |
| (1-20) <b>G</b>                             |  |                         |           |
| Not energy efficient - higher running costs |  |                         |           |
| <b>England &amp; Wales</b>                  |  | EU Directive 2002/91/EC |           |